

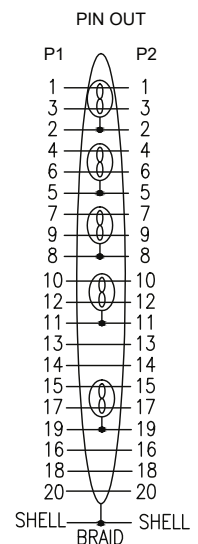
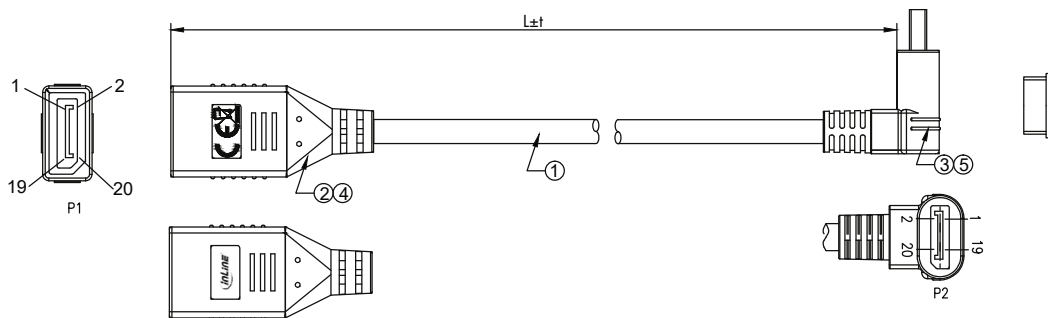
INLINE® DISPLAYPORT 1.4 ADAPTER CABLE M/F, 8K4K, DOWNWARD ANGLED, BLACK/GOLD



supported resolutions:

- UHD-II/FUHD 7680x4320 (8K4K) @30Hz RGB/4:4:4 and @60Hz RGB/4:2: 0 or DSC
- UHD 3840x2160 @120Hz RGB/4:4:4 8bit HDR OFF
- UHD 3840x2160 @120Hz RGB/4:2:2 12bit HDR ON
- UHD 3840x2160 @60Hz RGB/4 4:4 12bit HDR ON
- FullHD 1920x1080
- HD 1280x720

- in a resealable PE bag with EAN code
- DisplayPort female straight to DisplayPort male angled downwards
- Cable triple shielded
- Colour: black
- Gold-plated contacts



NOTE:
 1. Electronic test
 1.1 Open/short 100% test
 1.2 Tested by quantum data 980 handhold test instrument for DP1.4(32.4G)
 2. Tested by PC, 3840*2160 120Hz 4:4:4 8bit HDR OFF
 Tested by PC, 3840*2160 120Hz 4:2:2 12bit HDR ON
 Tested by PC, 3840*2160 60Hz 4:4:4 12bit HDR ON
 Tested by PC, 720P, 1080P
 3. PRINTING: High Speed Cable 20276 80°C 30V VW-1
 4. Packing: 1pc/20101A bag+label, 10pcs/pe bag+label2
 ROHS 3 support (EU 2015/863) Compliant

⑥	DUST COVER	PE/TRANSPARENT	1
⑤	OUTER MOLD	BLACK PVC	1
④	OUTER MOLD	BLACK PVC	1
③	DP MALE ANGLE	DP1.4 MALE, RED INSULATION, GOLD PLATED PIN, GOLD PLATED SHELL	1
②	DP FEMALE	DP1.4 FEMALE, GOLD PLATED PIN, GOLD PLATED SHELL	1
①	CABLE	[28AWG/1 BC*1P+D+AM]*5+28AWG/1 BC*4C+ADB+ JACKET:PVC /BLACK 7.0±0.2MM	1

EAN: 4043718292790
ART.-NR.: 17159U