

## INLINE® PATCH CABLE SLIM

### Cat.6A, S/FTP, TPE (LSZH) flexible, PoE, green

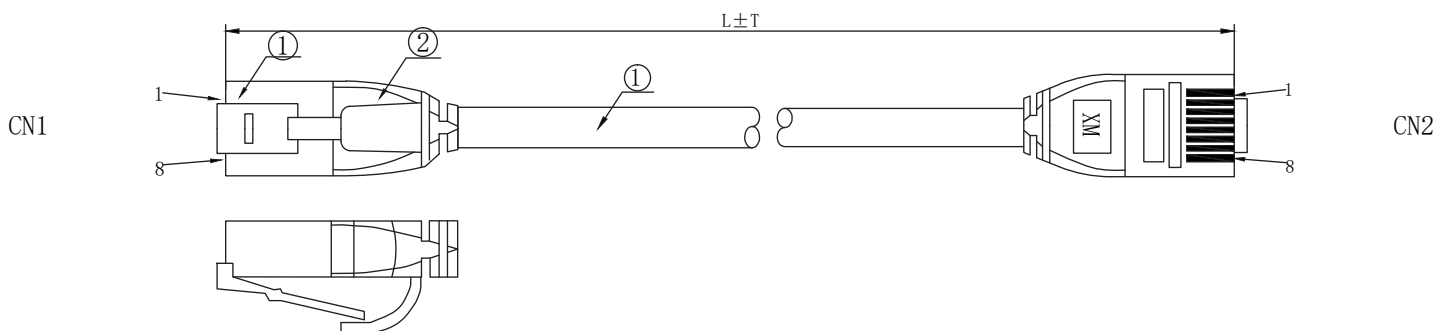
The InLine® patch cable Slim, Cat.6A, S/FTP, TPE (LSZH), PoE, sets standards in terms of performance and flexibility. With S/FTP shielding at pair and cable level, it guarantees first-class signal integrity and minimises electromagnetic interference.

The TPE (LSZH) sheathing not only makes the cable extremely flexible, but also safe for use in enclosed spaces, as it does not emit any halogen-containing vapours in the event of fire. In combination with its PoE capability, it not only enables the transmission of data, but also the power supply for PoE-capable devices. Perfectly suited for professional use in offices, data centres and other business-critical environments.

- Patch cable Slim
- S/FTP - Shielded Foiled Twisted Pair
- Fulfils the Cat. 6a requirement up to 500MHz
- 2x RJ45 plugs, moulded, with latching nose protection
- Blue coloured plug for differentiation
- TPE jacket
- LSZH - Low Smoke Zero Halogen: In the event of fire, the cable does not emit any halogen-containing vapours and is therefore safer than conventional halogen-containing cables, for use in enclosed spaces
- PoE - Power over Ethernet
- Conductor material CU (copper)

Technical data	
Article height:	1,2 cm
Article width:	1,5 cm
Assignment:	1:1
Brand:	InLine®
Colour:	Green
Conductor material:	CU (copper)
Data transmission rate:	10 Gb/s
Design:	Round cable slim
Gold plated contacts:	Yes
Operation temperature:	-20 to +75 °C
Outer diameter:	4.5 mm
Packing:	Retail
Patch cable category:	Cat.6A
PoE/PoE+/PoE++:	Yes
Sheath:	TPE (LSZH)
Shielding:	S/FTP (PiMf)
Side A:	RJ45 plug straight
Side B:	RJ45 plug straight
Signal:	Network
Storage temperature:	-20 to +75 °C
Type:	Cat.6A
Type of packaging:	InLine® bag 20103A
UL:	No
Wire size:	AWG 28

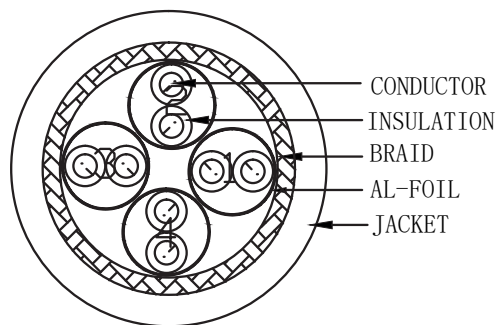
Item No.	Length	EAN
74933G	0.30 m	4043718335749
74955G	0.50 m	4043718335756
74901G	1 m	4043718335763
74914G	1.50 m	4043718335770
74902G	2 m	4043718335787
74903G	3 m	4043718335794
74905G	5 m	4043718335800
74907G	7.50 m	4043718335817
74900G	10 m	4043718335824
74915G	15 m	4043718335831
74920G	20 m	4043718335848
74925G	25 m	4043718335855
74930G	30 m	4043718335862



③	OVER MOLD	75A PVC	2
②	PLUG	RJ45 8P8C SHIELDED Plug PIN GOLD PLATED 3U", THE SHELL PLATED NICKEL, COLOUR: TRANSPARENT BLUE	2
①	CABLE	S/FTP CAT. 6A 28AWG (BC+AL-FOIL)*4P+ BRAID (AL-MG) JACKET: TPE-LSZH OD: 4.5 ± 0.2mm	1
NO.	PARTS NAME	SPECIFICATION STANDARD	QT' Y

**NOTE:**

1. ELECTRICAL TEST: 100% OPEN SHORT, MISS WIRE TEST
2. FLUKE Channel LINK TEST:  
TEST LIMIT: ISO11801 Channel Class EA
3. Working temperature: -20°C ~ +75°C  
Storage temperature: -20°C ~ +75°C
4. RoHS2.0 AND REACH compliant
5. Spray WORD: InLine CAT6A S/FTP 4x2x28AWG/7 TPE-LSZH  
ISO11801 & EN50173 & ANSI/TIA568.2-D **CE**



**Angabe der Kabellänge**  
Indicator of cable length

**WIRING DIAGRAM**

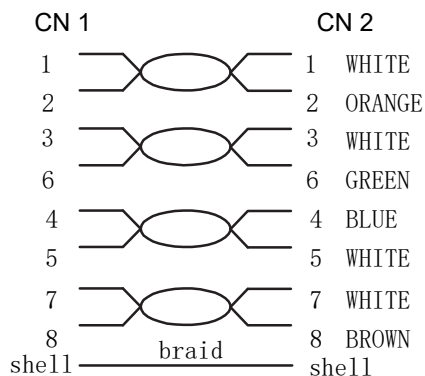


ABBILDUNG ÄHNLICH  
IMAGE SIMILAR

If you have any further questions, please contact [marketing@inline-info.com](mailto:marketing@inline-info.com)

[www.inline-info.com/en/](http://www.inline-info.com/en/)

**Disclaimer**

InLine® is a brand of INTOS ELECTRONIC AG | Siemensstraße 11 | D-35394 Gießen

**Documentation © 2024 INTOS ELECTRONIC AG**

All rights reserved. No part of this document may be reproduced in any form or by any means, electronic, mechanical or chemical, without the prior written permission of the publisher. It is possible that this document may still contain typographical faults or misprints.

However, the information in this document will be checked regularly and corrections will be made in the next edition. We accept no liability for errors of a technical or printing nature and their consequences. All trademarks and industrial property rights are acknowledged. Changes in the sense of technical progress can be made without prior notice. Our products, including packaging, are not toys, they may contain small parts and sharp objects.

Please keep away from children.