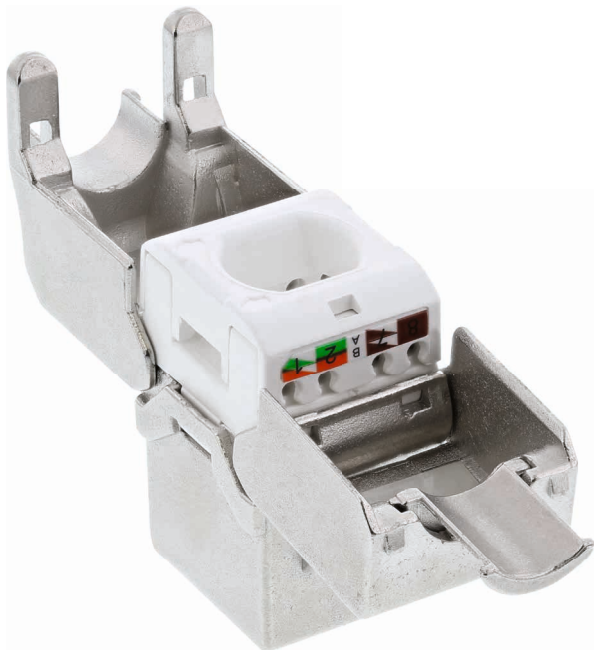


INLINE® RJ45 KEYSTONE JACK SNAP-IN MODULE CAT.6A

- RJ45 Keystone Jack Snap-In module Cat.6a 500MHz
- compatible up to 10Gb/s
- Suitable for 19" empty patch panel and wall boxes for keystone applications
- with LSA mount
- full shielded
- Zinc alloy housing
- for cable 22AWG - 24AWG and OD 5.0-8.5mm
- W: 15.8mm, L: 37.9mm, H: 22,2mm
- Supports PoE, PoE+
- RJ45 Contacts durability: 750 cycles min



EAN: 4043718255498
ART.-NR.: 76202A